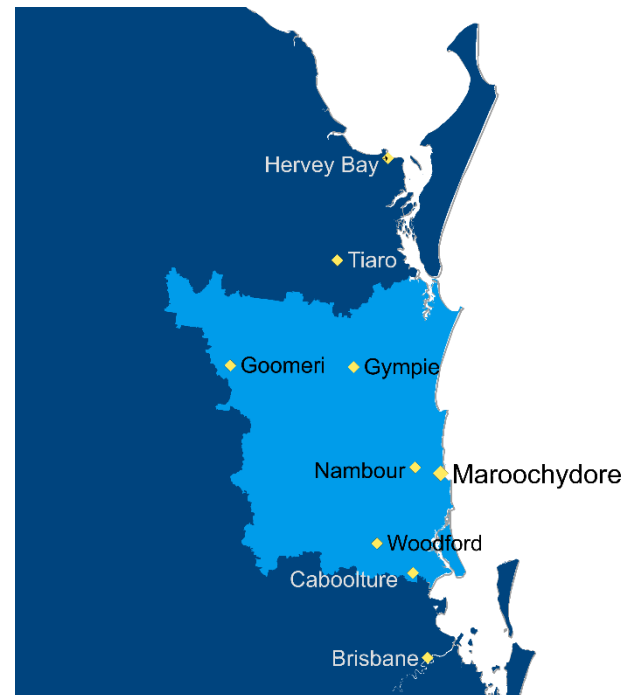


## Cancer on the Sunshine Coast

The CCQ region of the Sunshine Coast covers about 14,000 km<sup>2</sup>, or less than 0.8% of total Queensland. Situated on the coast, it is also bounded by the Greater Brisbane region to the south, South West region to the west, and Wide Bay Burnett region to the north. In 2017 it had a population of 532,351, which was 10.8% of Queensland's total population.

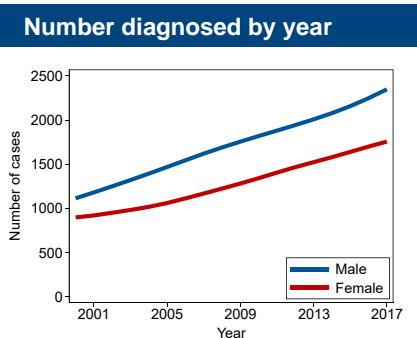
The major population centres are Caboolture, Nambour, Noosa and Gympie. Tourism is a significant industry in the region.

The nearest radiation treatment centre for cancer patients on the Sunshine Coast are the facilities in Nambour, Maroochydore, Buderim and Birtinya. Additional options are: radiation facilities in Hervey Bay (opened in 2018), or those in Greater Brisbane, especially North Lakes and Chermside.



Region Characteristics (2017 data unless otherwise specified)	Sunshine Coast	Queensland
<b>Per cent of population who ...</b>		
... are female	51.2%	50.4%
... are aged 50 years and over	26.5%	22.8%
... are Indigenous (2016)	3.0%	4.6%
... speak another language at home	5.2%	12.1%
... live in remote areas	0.0%	2.1%
... live within 2 hours drive of radiation treatment	100.0%	89.3%
... live more than 6 hours drive from radiation treatment	0.0%	1.9%
... live in disadvantaged areas	16.4%	18.1%
... live in affluent areas	5.7%	18.7%

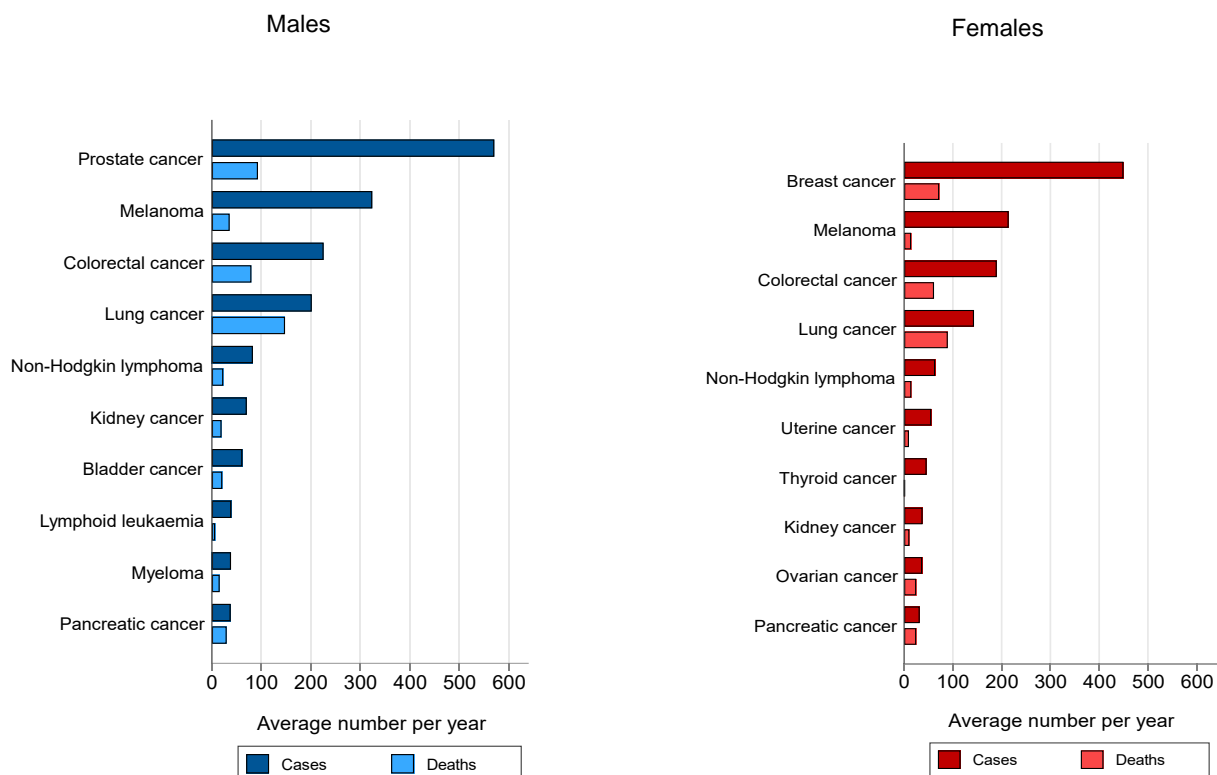
All Cancers* Sunshine Coast	Male	Female	Persons <sup>1</sup>
Number of new cases per year:	<b>2154</b>	<b>1637</b>	<b>3792</b>
Chance of diagnosis by age 80:	<b>1 in 2.1</b>	<b>1 in 2.7</b>	<b>1 in 2.4</b>
Median age at diagnosis:	<b>69 yrs</b>	<b>67 yrs</b>	<b>69 yrs</b>
Five-year relative survival:	<b>68%</b>	<b>73%</b>	<b>70%</b>
Number of deaths per year:	<b>712</b>	<b>489</b>	<b>1201</b>
Percent deaths before age 80:	<b>63%</b>	<b>62%</b>	<b>63%</b>



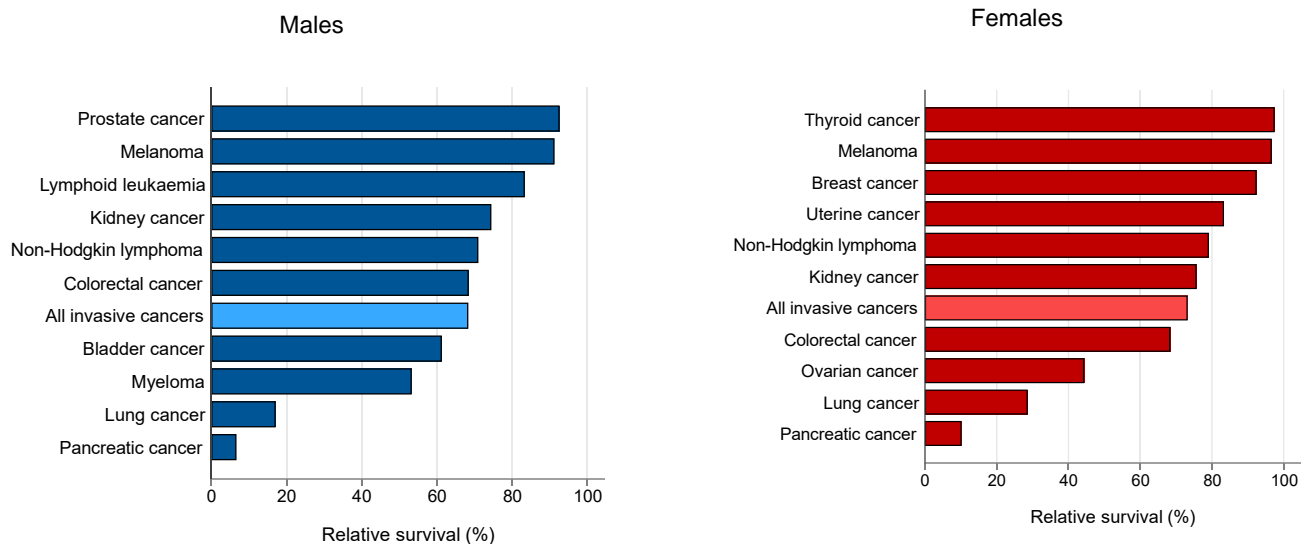
\*See notes on page 4 for more details

- Persons data may not equal the sum of males and females due to rounding.
- Cancers with a lifetime risk above 1 in 5 have the value provided to one decimal point.

**The 10 most common cancers diagnosed in Sunshine Coast by sex, 2013-2017**



**Five-year relative survival in Sunshine Coast by type of cancer and sex, 2013-2017**



Note: Relative survival calculated using the period method, for persons aged 0-89 years at diagnosis. Data are for "at risk" cases in the period 2013-2017.

**Every minute,  
Every hour,  
Every day.**

Call Cancer Council Queensland's **13 11 20** Information and Support line for cancer information or emotional and practical support. This confidential service is for all Queenslanders affected by cancer and is available Monday to Friday, 9am to 5pm.

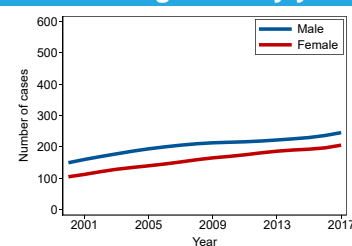
**Facts about the most common cancers in Sunshine Coast**

**Colorectal Cancer**



	Male	Female	Persons <sup>1</sup>
Number of new cases per year:	226	190	416
Chance of diagnosis by age 80:	1 in 16	1 in 20	1 in 18
Median age at diagnosis:	70 yrs	72 yrs	71 yrs
Five-year relative survival:	68%	68%	68%
Number of deaths per year:	80	61	141
Percent deaths before age 80:	65%	54%	60%

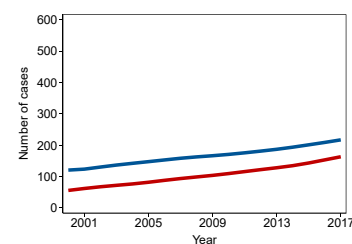
**Number diagnosed by year**



**Lung Cancer**



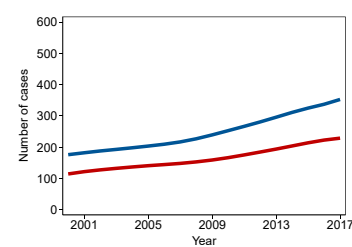
	Male	Female	Persons <sup>1</sup>
Number of new cases per year:	202	143	345
Chance of diagnosis by age 80:	1 in 17	1 in 25	1 in 21
Median age at diagnosis:	72 yrs	70 yrs	71 yrs
Five-year relative survival:	17%	29%	22%
Number of deaths per year:	148	90	238
Percent deaths before age 80:	71%	72%	72%



**Melanoma**



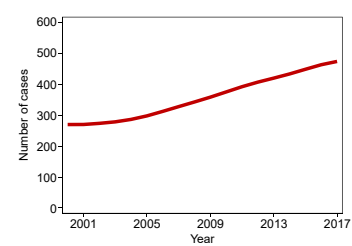
	Male	Female	Persons <sup>1</sup>
Number of new cases per year:	324	214	539
Chance of diagnosis by age 85:	1 in 11	1 in 16	1 in 13
Median age at diagnosis:	68 yrs	63 yrs	66 yrs
Five-year relative survival:	91%	97%	93%
Number of deaths per year:	36	14	50
Percent deaths before age 80:	63%	67%	64%



**Female Breast Cancer**



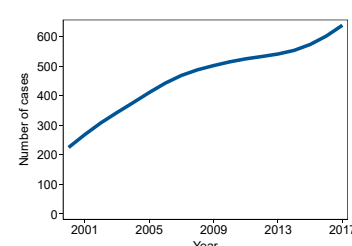
	Female
Number of new cases per year:	450
Chance of diagnosis by age 80:	1 in 8
Median age at diagnosis:	64 yrs
Five-year relative survival:	92%
Number of deaths per year:	72
Percent deaths before age 80:	73%



**Prostate Cancer**



	Male
Number of new cases per year:	571
Chance of diagnosis by age 80:	1 in 6
Median age at diagnosis:	69 yrs
Five-year relative survival:	93%
Number of deaths per year:	93
Percent deaths before age 80:	36%



See notes on page 4 for more details. Cancers with a lifetime risk above 1 in 5 have the value provided to one decimal point.

1. Persons data may not equal the sum of males and females due to rounding.

**Every minute,  
Every hour,  
Every day.**

Call Cancer Council Queensland's **13 11 20** Information and Support line for cancer information or emotional and practical support. This confidential service is for all Queenslanders affected by cancer and is available Monday to Friday, 9am to 5pm.

**More details on the top 10 cancers diagnosed in Sunshine Coast**

Type of cancer	Incidence <sup>a</sup>		Five-year relative survival <sup>c</sup> (%)	Mortality <sup>a</sup>	
	Average number per year	Annual rate <sup>b</sup> (per 100,000)		Average number per year	Annual rate <sup>b</sup> (per 100,000)
<b>Males</b>					
All invasive cancers	2154	635 [623,647]	68 [67,69]	712	207 [201,214]
Prostate cancer	571	157 [151,163]	93 [91,94]	93	27 [24,29]
Melanoma	324	102 [97,107]	91 [89,93]	36	11 [9,13]
Colorectal cancer	226	68 [64,72]	68 [65,72]	80	24 [21,26]
Lung cancer	202	57 [54,61]	17 [14,20]	148	42 [39,45]
Non-Hodgkin lymphoma	83	25 [22,28]	71 [65,76]	23	7 [5,8]
Kidney cancer	71	22 [19,24]	75 [68,80]	20	6 [5,7]
Bladder cancer	62	17 [16,20]	61 [53,69]	21	6 [5,7]
Lymphoid leukaemia	39	11 [10,13]	83 [75,90]	7	2 [1,3]
Myeloma	39	11 [9,13]	53 [44,62]	16	4 [4,6]
Pancreatic cancer	38	11 [9,13]	7 [3,11]	30	9 [7,10]
<b>Females</b>					
All invasive cancers	1637	464 [454,475]	73 [72,74]	489	125 [120,130]
Breast cancer	450	130 [125,136]	92 [91,94]	72	20 [18,22]
Melanoma	214	66 [62,70]	97 [94,98]	14	4 [3,5]
Colorectal cancer	190	52 [48,55]	68 [65,72]	61	15 [14,17]
Lung cancer	143	37 [34,40]	29 [25,33]	90	22 [20,25]
Non-Hodgkin lymphoma	64	17 [15,20]	79 [73,84]	15	4 [3,5]
Uterine cancer	56	15 [13,17]	83 [78,88]	10	3 [2,3]
Thyroid cancer	46	16 [14,18]	97 [93,100]	**	**
Kidney cancer	38	11 [9,12]	76 [67,83]	11	3 [2,4]
Ovarian cancer	37	10 [9,12]	44 [36,52]	25	6 [5,8]
Pancreatic cancer	32	8 [7,9]	10 [4,19]	25	6 [5,7]
<b>Persons<sup>d</sup></b>					
All invasive cancers	3792	545 [537,553]	70 [70,71]	1201	163 [159,167]
Prostate cancer	571	n.a.	93 [91,94]	93	n.a.
Melanoma	539	83 [80,86]	93 [92,95]	50	7 [6,8]
Female breast cancer	450	n.a.	92 [91,94]	72	n.a.
Colorectal cancer	416	59 [57,62]	68 [66,71]	141	19 [18,21]
Lung cancer	345	46 [44,49]	22 [19,24]	238	31 [30,33]
Non-Hodgkin lymphoma	147	21 [19,23]	75 [70,78]	38	5 [4,6]
Kidney cancer	108	16 [14,17]	75 [70,79]	30	4 [3,5]
Bladder cancer	80	11 [10,12]	58 [52,65]	30	4 [3,5]
Pancreatic cancer	70	9 [8,11]	9 [6,13]	55	7 [6,8]
Lymphoid leukaemia	66	9 [8,10]	85 [79,90]	12	2 [1,2]

Notes:

- Incidence and mortality data are averaged over the 5 year period from 2013-2017.
- Incidence and mortality rates have been directly age-standardised to the 2001 Australian Standard population, with 95% confidence intervals shown in brackets.
- Five-year relative survival calculated using the period method, for persons aged 0-89 years at diagnosis, with 95% confidence intervals shown in brackets. Estimates are for "at risk" cases in the period 2013-2017
- Persons data may not equal the sum of males and females due to rounding.

Symbols:

\*\* Incidence or mortality counts that averaged less than five per year (and the corresponding rates) have been suppressed to protect confidentiality. Counts and rates for persons have also been suppressed when necessary.

n.a. = not applicable (rates for persons not applicable for sex-specific cancers).

**Every minute,  
Every hour,  
Every day.**

Call Cancer Council Queensland's **13 11 20** Information and Support line for cancer information or emotional and practical support. This confidential service is for all Queenslanders affected by cancer and is available Monday to Friday, 9am to 5pm.

**Methodology**

1. All cancer data are sourced from the Queensland Cancer Register. The access and use of these data for reporting purposes is subject to strict confidentiality and privacy constraints.
2. Census and population data were obtained from the Australian Bureau of Statistics.
3. Population death data used in relative survival calculations were obtained from the Australian Coordinating Registry of Births, Deaths and Marriages.
4. All calculations were performed using Stata v16.1.
5. Trend lines for incidence numbers have been smoothed using the 'Lowess' method.
6. Remote areas are defined by the Remoteness Areas 2016 classification (combines Remote and Very Remote).
7. Travelling times to radiation treatment are calculated using spatial and road network software, and are approximate based on the shortest road distances at the recommended speed limits.
8. 'Affluent areas' are the 20% of most advantaged Statistical Areas 2 (SA2s) and 'Disadvantaged areas' are the 20% of most disadvantaged SA2s as defined by the 2016 SEIFA Index of Advantage and Disadvantage obtained from the Australian Bureau of Statistics.
9. Relative survival compares overall survival among those diagnosed with cancer to the expected survival of the general population, taking into account age, sex and year of diagnosis.

**Disclaimer:** The information in this publication should not be used as a substitute for advice from a properly qualified medical professional who can advise you about your own individual medical needs. It is not intended to constitute medical advice and is provided for general information purposes only. Information on cancer, including the diagnosis, treatment and prevention of cancer, is constantly being updated and revised by medical professionals and the research community.

Cancer Council Queensland does not warrant that the information in this publication is correct, up to date or complete nor that it is suitable for any particular purpose. Your use of the information in this publication is at your own risk. To the fullest extent permitted by law, Cancer Council Queensland does not accept any liability for any reliance placed on information that is not correct, complete or up to date, or that is not suited to the purpose for which it was relied upon. If any warranty or guarantee cannot by law be excluded, then, to the extent permitted by law, Cancer Council Queensland's liability for such warranty or guarantee is limited, at Cancer Council Queensland's option, to supplying the information or materials again or paying the cost of having the information or materials supplied again.

**Every minute,  
Every hour,  
Every day.**

Call Cancer Council Queensland's **13 11 20** Information and Support line for cancer information or emotional and practical support. This confidential service is for all Queenslanders affected by cancer and is available Monday to Friday, 9am to 5pm.