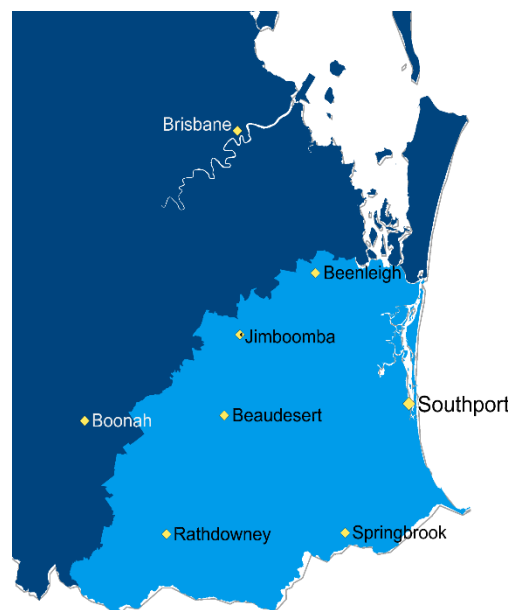


## Cancer on the Gold Coast

The CCQ region of the Gold Coast covers 3,870 km<sup>2</sup>, or less than 0.2% of total Queensland. It includes the most south-eastern parts of the State. In 2017 it had a population of 699,814, which was 14% of Queensland's total population.

Most of the population resides along the coastal strip of the Gold Coast, including Surfers Paradise, Southport and Broadbeach. Tourism is a significant industry for the Gold Coast.

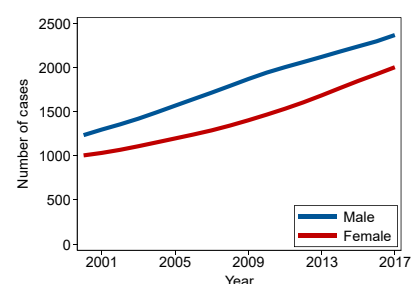
Radiation treatment centres for cancer patients in the Gold Coast region are located at the Gold Coast University Hospital, with additional private facilities at Tugun and Southport (both treating public patients). Private facilities are also available in Springfield.



Region Characteristics (2017 data unless otherwise specified)	Gold Coast	Queensland
<b>Per cent of population who ...</b>		
... are female	51.1%	50.4%
... are aged 50 years and over	22.8%	22.8%
... are Indigenous (2016)	2.3%	4.6%
... speak another language at home	11.6%	12.1%
... live in remote areas	0.0%	2.1%
... live within 2 hours drive of radiation treatment	100.0%	89.3%
... live more than 6 hours drive from radiation treatment	0.0%	1.9%
... live in disadvantaged areas	10.3%	18.1%
... live in affluent areas	7.1%	18.7%

All Cancers* Gold Coast	Male	Female	Persons <sup>1</sup>
Number of new cases per year:	<b>2239</b>	<b>1852</b>	<b>4091</b>
Chance of diagnosis by age 80: <sup>2</sup>	<b>1 in 2.1</b>	<b>1 in 2.7</b>	<b>1 in 2.4</b>
Median age at diagnosis:	<b>68 yrs</b>	<b>66 yrs</b>	<b>67 yrs</b>
Five-year relative survival:	<b>70%</b>	<b>74%</b>	<b>72%</b>
Number of deaths per year:	<b>716</b>	<b>539</b>	<b>1254</b>
Percent deaths before age 80:	<b>64%</b>	<b>63%</b>	<b>64%</b>

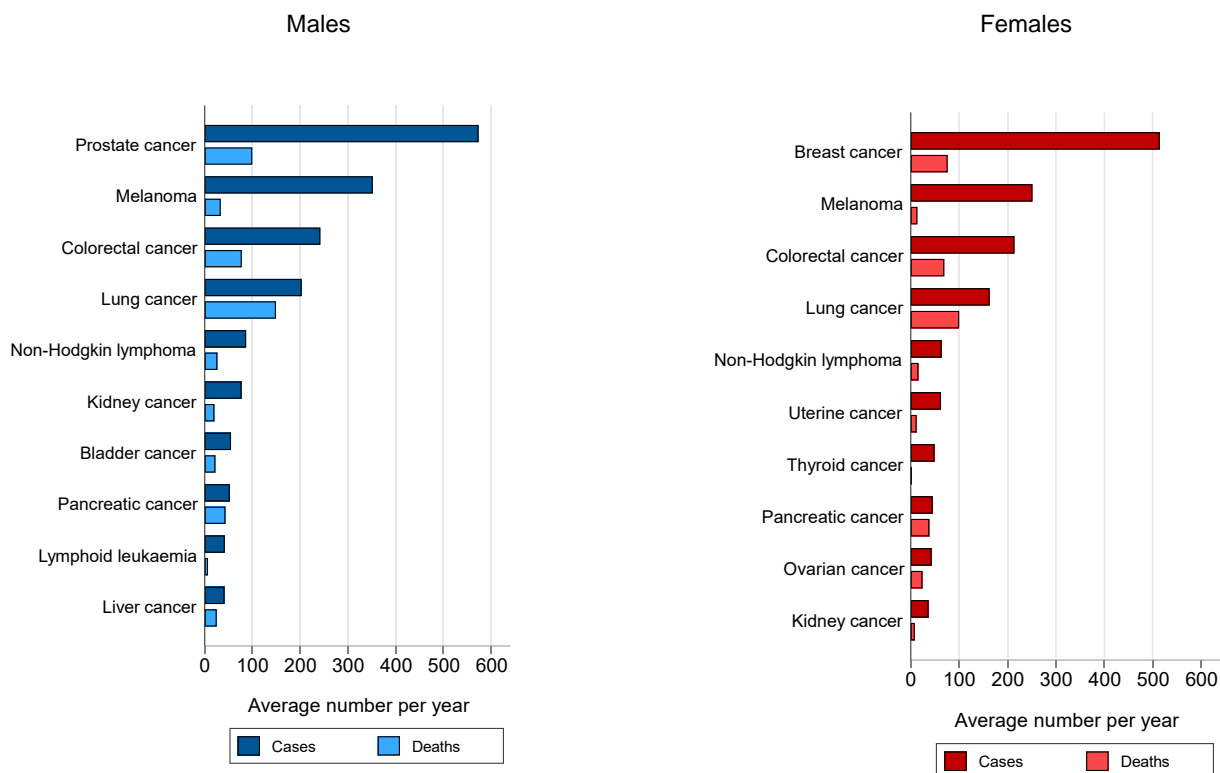
Number diagnosed by year



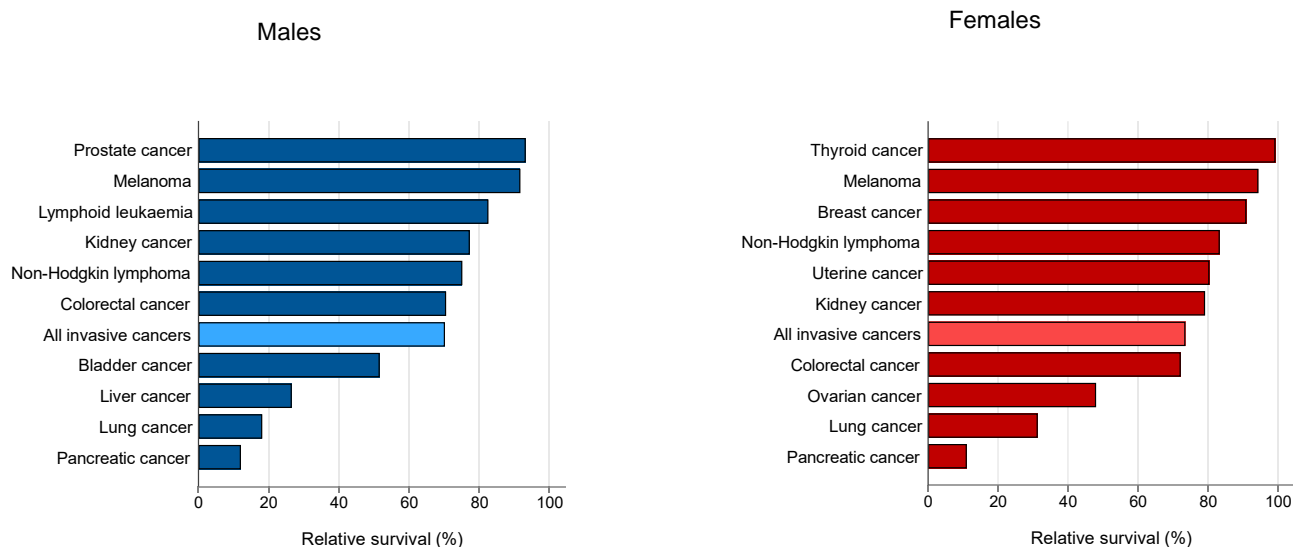
\*See notes on page 4 for more details

- Persons data may not equal the sum of males and females due to rounding.
- Cancers with a lifetime risk above 1 in 5 have the value provided to one decimal point.

**The 10 most common cancers diagnosed in Gold Coast by sex, 2013-2017**



**Five-year relative survival in Gold Coast by type of cancer and sex, 2013-2017**



Note: Relative survival calculated using the period method, for persons aged 0-89 years at diagnosis. Data are for "at risk" cases in the period 2013-2017.

**Every minute,  
Every hour,  
Every day.**

Call Cancer Council Queensland's **13 11 20** Information and Support line for cancer information or emotional and practical support. This confidential service is for all Queenslanders affected by cancer and is available Monday to Friday, 9am to 5pm.

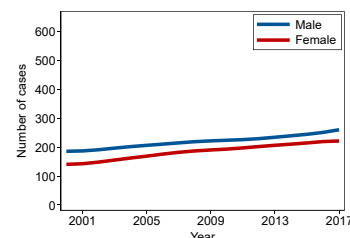
**Facts about the most common cancers in Gold Coast**

**Colorectal Cancer**



	Male	Female	Persons
Number of new cases per year:	242	214	457
Chance of diagnosis by age 80:	1 in 15	1 in 20	1 in 17
Median age at diagnosis:	69 yrs	72 yrs	71 yrs
Five-year relative survival:	71%	72%	71%
Number of deaths per year:	78	69	147
Percent deaths before age 80:	66%	53%	60%

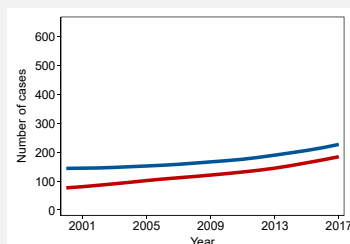
**Number diagnosed by year**



**Lung Cancer**



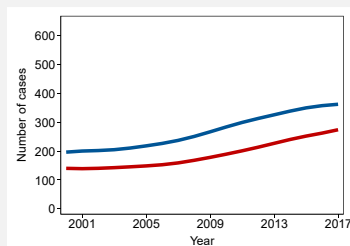
	Male	Female	Persons
Number of new cases per year:	203	163	366
Chance of diagnosis by age 80:	1 in 19	1 in 23	1 in 21
Median age at diagnosis:	71 yrs	71 yrs	71 yrs
Five-year relative survival:	18%	31%	24%
Number of deaths per year:	149	100	249
Percent deaths before age 80:	68%	71%	69%



**Melanoma**



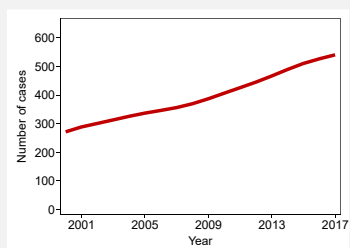
	Male	Female	Persons
Number of new cases per year:	352	252	604
Chance of diagnosis by age 85:	1 in 11	1 in 16	1 in 13
Median age at diagnosis:	67 yrs	60 yrs	64 yrs
Five-year relative survival:	92%	94%	93%
Number of deaths per year:	34	14	47
Percent deaths before age 80:	60%	71%	63%



**Female Breast Cancer**



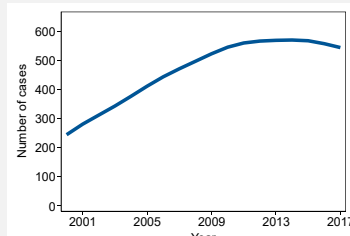
	Female
Number of new cases per year:	515
Chance of diagnosis by age 80:	1 in 8
Median age at diagnosis:	61 yrs
Five-year relative survival:	91%
Number of deaths per year:	76
Percent deaths before age 80:	70%



**Prostate Cancer**



	Male
Number of new cases per year:	574
Chance of diagnosis by age 80:	1 in 6
Median age at diagnosis:	68 yrs
Five-year relative survival:	93%
Number of deaths per year:	100
Percent deaths before age 80:	44%



See notes on page 4 for more details. Cancers with a lifetime risk above 1 in 5 have the value provided to one decimal point.

1. Persons data may not equal the sum of males and females due to rounding

**Every minute,  
Every hour,  
Every day.**

Call Cancer Council Queensland's **13 11 20** Information and Support line for cancer information or emotional and practical support. This confidential service is for all Queenslanders affected by cancer and is available Monday to Friday, 9am to 5pm.

**More details on the top 10 cancers diagnosed in Gold Coast**

Type of cancer	Incidence <sup>a</sup>		Five-year relative survival <sup>c</sup> (%)	Mortality <sup>a</sup>	
	Average number per year	Annual rate <sup>b</sup> (per 100,000)		Average number per year	Annual rate <sup>b</sup> (per 100,000)
<b>Males</b>					
All invasive cancers	2239	619 [607,630]	70 [69,71]	716	202 [196,209]
Prostate cancer	574	151 [145,157]	93 [92,95]	100	29 [26,31]
Melanoma	352	100 [95,104]	92 [90,94]	34	10 [8,11]
Colorectal cancer	242	68 [64,72]	71 [67,74]	78	22 [20,24]
Lung cancer	203	56 [53,60]	18 [15,21]	149	42 [39,45]
Non-Hodgkin lymphoma	87	25 [22,27]	75 [70,80]	26	8 [6,9]
Kidney cancer	77	21 [19,24]	77 [72,82]	20	6 [5,7]
Bladder cancer	55	16 [14,18]	52 [44,59]	22	6 [5,8]
Pancreatic cancer	53	15 [13,17]	12 [8,17]	43	12 [10,14]
Lymphoid leukaemia	42	12 [10,13]	83 [75,89]	7	2 [1,3]
Liver cancer	41	11 [10,13]	27 [20,34]	25	7 [6,8]
<b>Females</b>					
All invasive cancers	1852	472 [462,482]	74 [72,75]	539	129 [124,134]
Breast cancer	515	133 [128,139]	91 [89,92]	76	19 [17,21]
Melanoma	252	67 [63,71]	94 [92,96]	14	3 [3,4]
Colorectal cancer	214	53 [50,57]	72 [69,75]	69	16 [15,18]
Lung cancer	163	40 [37,43]	31 [28,35]	100	24 [22,26]
Non-Hodgkin lymphoma	64	16 [14,18]	83 [78,88]	16	4 [3,5]
Uterine cancer	63	16 [14,18]	80 [75,85]	12	3 [2,4]
Thyroid cancer	49	14 [12,15]	99 [96,101]	**	**
Pancreatic cancer	45	11 [9,12]	11 [7,16]	38	9 [8,10]
Ovarian cancer	43	11 [9,12]	48 [40,55]	24	6 [5,7]
Kidney cancer	36	9 [8,11]	79 [71,86]	8	2 [1,3]
<b>Persons<sup>d</sup></b>					
All invasive cancers	4091	540 [532,547]	72 [71,72]	1254	162 [158,166]
Melanoma	604	82 [79,85]	93 [91,94]	47	6 [5,7]
Prostate cancer	574	n.a.	93 [92,95]	100	n.a.
Female breast cancer	515	n.a.	91 [89,92]	76	n.a.
Colorectal cancer	457	60 [58,63]	71 [69,74]	147	19 [18,20]
Lung cancer	366	47 [45,49]	24 [21,26]	249	32 [30,34]
Non-Hodgkin lymphoma	151	20 [19,22]	79 [75,82]	42	5 [5,6]
Kidney cancer	113	15 [14,16]	78 [73,82]	29	4 [3,4]
Pancreatic cancer	98	13 [11,14]	12 [9,15]	82	10 [9,11]
Bladder cancer	75	10 [9,11]	49 [42,55]	33	4 [4,5]
Lymphoid leukaemia	69	9 [8,10]	84 [78,89]	10	1 [1,2]

Notes:

- Incidence and mortality data are averaged over the 5 year period from 2013-2017.
- Incidence and mortality rates have been directly age-standardised to the 2001 Australian Standard population, with 95% confidence intervals shown in brackets.
- Five-year relative survival calculated using the period method, for persons aged 0-89 years at diagnosis, with 95% confidence intervals shown in brackets. Estimates are for "at risk" cases in the period 2013-2017
- Persons data may not equal the sum of males and females due to rounding.

Symbols:

\*\* Incidence or mortality counts that averaged less than five per year (and the corresponding rates) have been suppressed to protect confidentiality. Counts and rates for persons have also been suppressed when necessary.

n.a. = not applicable (rates for persons not applicable for sex-specific cancers).

**Every minute,  
Every hour,  
Every day.**

Call Cancer Council Queensland's **13 11 20** Information and Support line for cancer information or emotional and practical support. This confidential service is for all Queenslanders affected by cancer and is available Monday to Friday, 9am to 5pm.

**Methodology**

1. All cancer data are sourced from the Queensland Cancer Register. The access and use of these data for reporting purposes is subject to strict confidentiality and privacy constraints.
2. Census and population data were obtained from the Australian Bureau of Statistics.
3. Population death data used in relative survival calculations were obtained from the Australian Coordinating Registry of Births, Deaths and Marriages.
4. All calculations were performed using Stata v16.1.
5. Trend lines for incidence numbers have been smoothed using the 'Lowess' method.
6. Remote areas are defined by the Remoteness Areas 2016 classification (combines Remote and Very Remote).
7. Travelling times to radiation treatment are calculated using spatial and road network software, and are approximate based on the shortest road distances at the recommended speed limits.
8. 'Affluent areas' are the 20% of most advantaged Statistical Areas 2 (SA2s) and 'Disadvantaged areas' are the 20% of most disadvantaged SA2s as defined by the 2016 SEIFA Index of Advantage and Disadvantage obtained from the Australian Bureau of Statistics.
9. Relative survival compares overall survival among those diagnosed with cancer to the expected survival of the general population, taking into account age, sex and year of diagnosis.

**Disclaimer:** The information in this publication should not be used as a substitute for advice from a properly qualified medical professional who can advise you about your own individual medical needs. It is not intended to constitute medical advice and is provided for general information purposes only. Information on cancer, including the diagnosis, treatment and prevention of cancer, is constantly being updated and revised by medical professionals and the research community.

Cancer Council Queensland does not warrant that the information in this publication is correct, up to date or complete nor that it is suitable for any particular purpose. Your use of the information in this publication is at your own risk. To the fullest extent permitted by law, Cancer Council Queensland does not accept any liability for any reliance placed on information that is not correct, complete or up to date, or that is not suited to the purpose for which it was relied upon. If any warranty or guarantee cannot by law be excluded, then, to the extent permitted by law, Cancer Council Queensland's liability for such warranty or guarantee is limited, at Cancer Council Queensland's option, to supplying the information or materials again or paying the cost of having the information or materials supplied again.

**Every minute,  
Every hour,  
Every day.**

Call Cancer Council Queensland's **13 11 20** Information and Support line for cancer information or emotional and practical support. This confidential service is for all Queenslanders affected by cancer and is available Monday to Friday, 9am to 5pm.