

the Daffodil

ECHO Trial

shaping our understanding of survival
rates for ovarian cancer

Daffodil Place

a new vision of hope

Gifts in Memory

honouring those we have lost to cancer



**Cancer
Council**
Queensland





Progress is the key to longevity and success. In 2020, we learned, out of necessity, to be agile and embrace change. In 2021, we are taking these changes in our stride and seizing new ideas to improve our services in support of Queenslanders impacted by cancer. You are a vital part of this mission.

In this issue of The Daffodil, it is with pleasure that I introduce you to new projects that we have envisioned, invested in and are actioning. These are projects that simply would not get off the ground without your ongoing support, and for that I thank you wholeheartedly.

The commitment and trust of donors like you, has inspired us to continually improve and expand our services for the past 60 years. This year, we are investing in groundbreaking ovarian cancer research, growing our emotional and practical cancer support services and finding new and convenient ways for the Queensland community to share in our mission.

I hope you enjoy discovering these new projects, which you have made possible.

Chris McMillan,
Chief Executive Officer, Cancer Council Queensland

In this issue



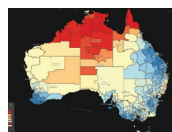
3
Your support



8
Gift in
Memory Portal



4
ECHO Grant



10
Australian
Cancer Atlas



6
Daffodil Place



11
Honouring
Annaliese

Contact us

Cancer Council Queensland
PO Box 201 Spring Hill QLD 4004
T: 1300 66 39 36
E: donorrelations@cancerqld.org.au

We'd love to hear from you about the stories you would like included in upcoming issues of *The Daffodil*.

2020

What we achieved thanks to your support



1987 wigs and
turbans distributed
to cancer patients
experiencing hair loss.



19,488 nights of
accommodation were
provided in our lodges.



7597 contacts
responded to by 13 11 20.



67,967 kilometres
travelled for Lodge to
Treatment service.



914 Queenslanders assisted
with financial support through
our Practical Support programs.



75 organisations catering to
children provided with funding
to create shade structures and
reduce skin cancer risk.

ACCR grant provides \$2 million towards ovarian cancer research

Each year, Cancer Council Queensland assists two groundbreaking cancer research projects with funding, through its Accelerating Collaborative Cancer Research (ACCR) grants scheme. This contribution towards lifesaving cancer research, on behalf of Cancer Council Queensland, is thanks to you. Your ongoing support, commitment and determination to make a difference, is what enables us to provide such critical funding to breakthrough cancer research projects.

Professor Sandi Hayes of Griffith University is one of the recipients of the 2021-2024 ACCR grants for her project which focuses on the effect exercise during cancer treatment can have on survival rates for women with ovarian cancer.

Ovarian cancer has the worst survival rates of all gynaecological cancers, with only 45% of those diagnosed living longer than 5 years. Its treatment is associated with high levels of morbidity, declines in quality of life and challenges in meeting supportive care needs.

The ECHO trial: A randomised, controlled trial evaluating the effect of Exercise during CHemotherapy for Ovarian cancer (ECHO) on survival and health resource use, is a clinical trial designed to determine the effects of an exercise intervention during first-line chemotherapy on survival from ovarian cancer. The study will also assess other outcomes of importance to women including function, quality of life, treatment adherence and costs. Understanding the impacts of exercise on these outcomes will lead to recommendations for improving the standard care of ovarian cancer. Further, findings will provide a solid indication for the potential benefit of exercise in other cancers, including more rare cancers.

In December 2020, Professor Hayes and her team had recruited 300 women into the ECHO trial.

‘Data from these women allows us to determine whether exercise can improve function, physical wellbeing and quality of life,’ said Professor Hayes.

‘However, now comes the most exciting part...with this amazing Accelerating Collaborative Cancer Research grant from Cancer Council Queensland, in collaboration with Griffith University, we will be able to recruit an additional 200 women into ECHO. This will bring our total sample size to 500 women and as such we are now poised to assess the effect of exercise on survival, health resource use and chemotherapy adherence.’

Professor Hayes’ team are making strides on their research in 2021 thanks to the much-needed funding provided by the ACCR grants scheme. Thank you so much for making this funding a reality. Your support is ensuring that Professor Hayes’ important research into ovarian cancer can continue and make a real difference to the lives of Queensland women.

‘Ovarian cancer has the worst survival rates of all gynaecological cancers, with only 45% of those diagnosed living longer than 5 years.’

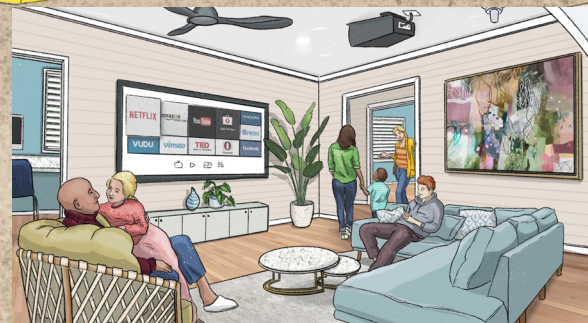
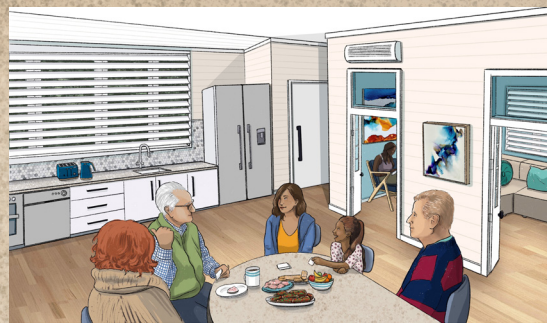
– Professor Sandi Hayes



Professor Sandi Hayes and Cancer Council Queensland Chair, Dr Anita Green

Daffodil Place: a new vision of hope for Queenslanders impacted by cancer

We're excited to announce plans for a new cancer support service. Daffodil Place is expected to open its doors in Rockhampton in 2022, and eventually in other locations throughout the state.



Artist's impressions

Supporting Queenslanders now and in the future

Cancer Council Queensland is forever looking to the future to ensure we are ready to support Queenslanders living with cancer, no matter where they are in the state. We invest millions of dollars every year into research that we believe will one day find a cure or more effective treatments for cancer. Even when that day arrives though, Cancer Council Queensland services will still be needed to help people recover from their cancer experience and rebuild their lives. Hence the idea of Daffodil Place was born.

Support services that focus on wellbeing and connectedness

The cancer support services we plan to offer at Daffodil Place will be a little different to our current practical and emotional support services. They will focus on wellbeing and mindfulness, and also teach strategies and skills for living well during and after cancer. Activities may include gardening, craft workshops and yoga classes. The space itself will encourage inclusivity and relaxation, with bright and open areas ideal for unwinding.

All support will be free. No appointment or referral will be needed and there will be no time limit on support. It will be available for as long as it's needed and open not only to people living with cancer, but all cancer survivors, their family, friends and carers.

A place to find answers and advice

Nurse counsellors and psychologists will be at Daffodil Place to provide information on every aspect of living with, or after, cancer. They will assist with practical issues such as finances and

insurance, and how these are impacted by a cancer diagnosis. Other considerations such as communication, social struggles, or difficulty managing symptoms during treatment will also be addressed with helpful and practical advice, and suggested coping strategies for the future.

Support specific to the carers and loved ones will be available, including bereavement support and guidance on how to talk to children about cancer. No question or concern is too insignificant, and all queries will be treated with respect and in confidence. Our aim is for Daffodil Place is to create a space where people can go to ask questions about the social, emotional and practical aspects of both living with and after cancer that they feel too nervous, hesitant or even embarrassed to ask their treating team in a clinical setting.

You can help make our vision a reality

As a valued and committed supporter, we invite you to be a part of making Daffodil Place a success. We are keenly aware of the increased impact of cancer on regional and rural Queenslanders and aim to help reduce that burden through Daffodil Place. One in two people will develop cancer in their lifetime, so the need for cancer support and a centre like Daffodil Place, has never been greater.

If you would like to help make our vision of Daffodil Place a reality, visit cancerqld.org.au or call 1300 66 39 36 to make a donation. Your support will help improve the lives of Queenslanders impacted by cancer by creating innovative new spaces focused on providing specialised cancer support.

'No Queenslanders should face cancer alone. Anyone in our community impacted by cancer will readily receive a helping hand or shoulder to lean on, by visiting Daffodil Place. It will be a relaxing, welcoming environment free from judgement and plentiful in support.' – Dr Anita Green, Chair Cancer Council Queensland



Free Will Service

Donations in memory of loved ones

A new way to honour someone who has passed

In our recent supporter survey, more than 90% of Cancer Council Queensland donors shared that they have lost a loved one to cancer. At such times of loss, we are honoured by the generosity of families and loved ones who choose to request gifts to Cancer Council Queensland in lieu of flowers.

In the past, Cancer Council Queensland has supported Gift In Memory donations by partnering with funeral homes to leave envelopes on church pews during the service. As the world moves online, the loved ones of those who have passed away from cancer have asked for a more convenient means of donating.

In the coming months we will launch a new Gift in Memory Portal, an online portal that allows funeral guests and loved ones to make a donation to Cancer Council Queensland in honour of someone who has passed.

The portal supports the creation of a tribute page, where family, friends and acquaintances can leave personal messages, recalling memories and sharing kind words about the person who has passed away, when they leave a donation. The link to this page can

easily be shared with anyone, including funeral guests and those who are unable to attend the service, so that they may still be able to say their goodbyes and assist in leaving a legacy in honour of the person.

Leaving a gift in loving memory of a person who has passed away from cancer, or who has a special connection with Cancer Council Queensland, is a heartfelt way to honour their life. All donations go towards funding lifesaving cancer research and supporting those impacted by the disease today and in the future.

Our Gift in Memory Portal will be available on our website in the coming months. To make an inquiry about this service, please contact our Supporter Experience team on **1300 66 39 36**.

For your peace of mind and a cancer free future.

Anyone leaving a bequest in their Will to Cancer Council Queensland is eligible to use our Free Will Service. For your peace of mind and a cancer free future, enquire today.

Free Will Service

Phone **1300 66 39 36** or visit cancerqld.org.au/bequests to find your local Free Will Service law firm.



More ways you can help

Volunteer with us

Find out more about volunteering opportunities by visiting our website www.cancerqld.org.au or by calling our volunteer support line on **1300 851 957**

Host a fundraiser

Discover our exciting upcoming fundraising campaigns by visiting our website or by calling our fundraising hotline on **1300 65 65 85**

Sign up to give a monthly donation

You can do this by visiting our website or calling **1300 66 39 36**

Purchase a Play For Purpose raffle ticket

You can buy your ticket at www.playforpurpose.com.au/charities/cancer-council

Support a Workplace Giving Program

Find out more on our website or by emailing corporatepartnerships@cancerqld.org.au

The Australian Cancer Atlas

Have you heard of the Australian Cancer Atlas? It's a collaborative project between Cancer Council Queensland and QUT. The Australian Cancer Atlas is an interactive online resource helping researchers, members of the community, medical professionals and policy makers to easily visualise and understand how cancer diagnoses and fatalities vary depending on where people live in Australia.

The Atlas shows patterns of cancer in Australia, which can be used to support research priorities and policies going forward. It also gives health agencies and policy makers a better understanding of where health requirements need to be addressed across the country.

Thanks to your support, we have been able to make some exciting and important updates to the Atlas in 2021, which will vastly improve its usability and the vital role it plays in easing the burden of cancer across Australia, and the globe!

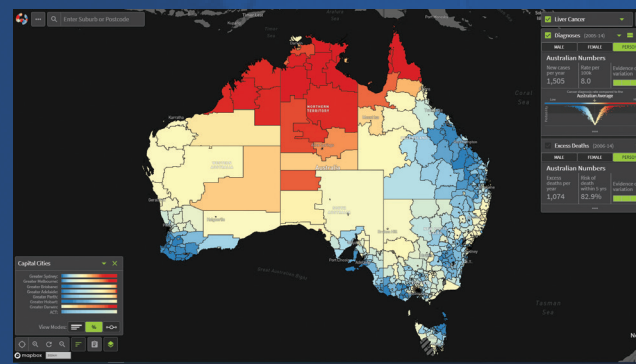
These updates include:

- The inclusion of the latest national data on how cancer diagnosis and excess death rates vary by geographical area across Australia.
- The inclusion of information on geographical patterns of classic myeloproliferative neoplasms, or MPNs, a rare group of blood cancers.
- A free methodology e-book, which is now available on the Atlas website, that provides a detailed, practical guide for epidemiologists, statisticians and other researchers interested in developing their own cancer atlas, based on our model.
- New funding through an ARC Linkage Grant for the next three years to develop the next phase of the Atlas, which will examine how the geographical patterns change over time, additional measures of cancer burden, and more innovative ways of communicating that to the users of the Atlas.

These updates will further improve the vital information the Atlas is capable of providing.

Since its launch in September 2018, the Australian Cancer Atlas has had over 47,600 active users and nearly 600 downloads of the geographical results. Researchers in New Zealand and The Netherlands are currently utilising the same methods to generate similar national cancer atlases. This is a testament to its overall success in helping us to determine cancer patterns across Australia.

Thank you so much for your ongoing support, which has allowed us to fund such insightful cancer resources that are vital to helping us improve the quality of life of Queenslanders with cancer, and plan for the future of cancer care across Australia, and the world.



Thank you for taking part in our most recent donor survey. Your answers help us understand what inspires you, what's important to you, and how we can best work together to create a cancer free future.

You told us:

- Your key motivations for supporting Cancer Council Queensland are that:
 - > you believe in our vision for a cancer free future and want to do everything you can to support it
 - > you want to help support Queenslanders affected by cancer through practical and emotional support
 - > you want to fund research into childhood and adult cancers.
- 91 per cent of you have been directly affected by cancer, with:
 - > 28 per cent having been diagnosed with cancer; and
 - > 62 per cent having lost a loved one to cancer.

If you have any questions about how we use your donations or how much information you are receiving from Cancer Council Queensland, please contact us on **1300 66 36 39**.

13 11 20
cancerqld.org.au